



# The Say Ahh Project

## Rheumatic Fever Prevention in Flaxmere



**SAY  
AHH**

**Sore throats can lead to  
rheumatic fever and heart disease.  
Get them checked early.**



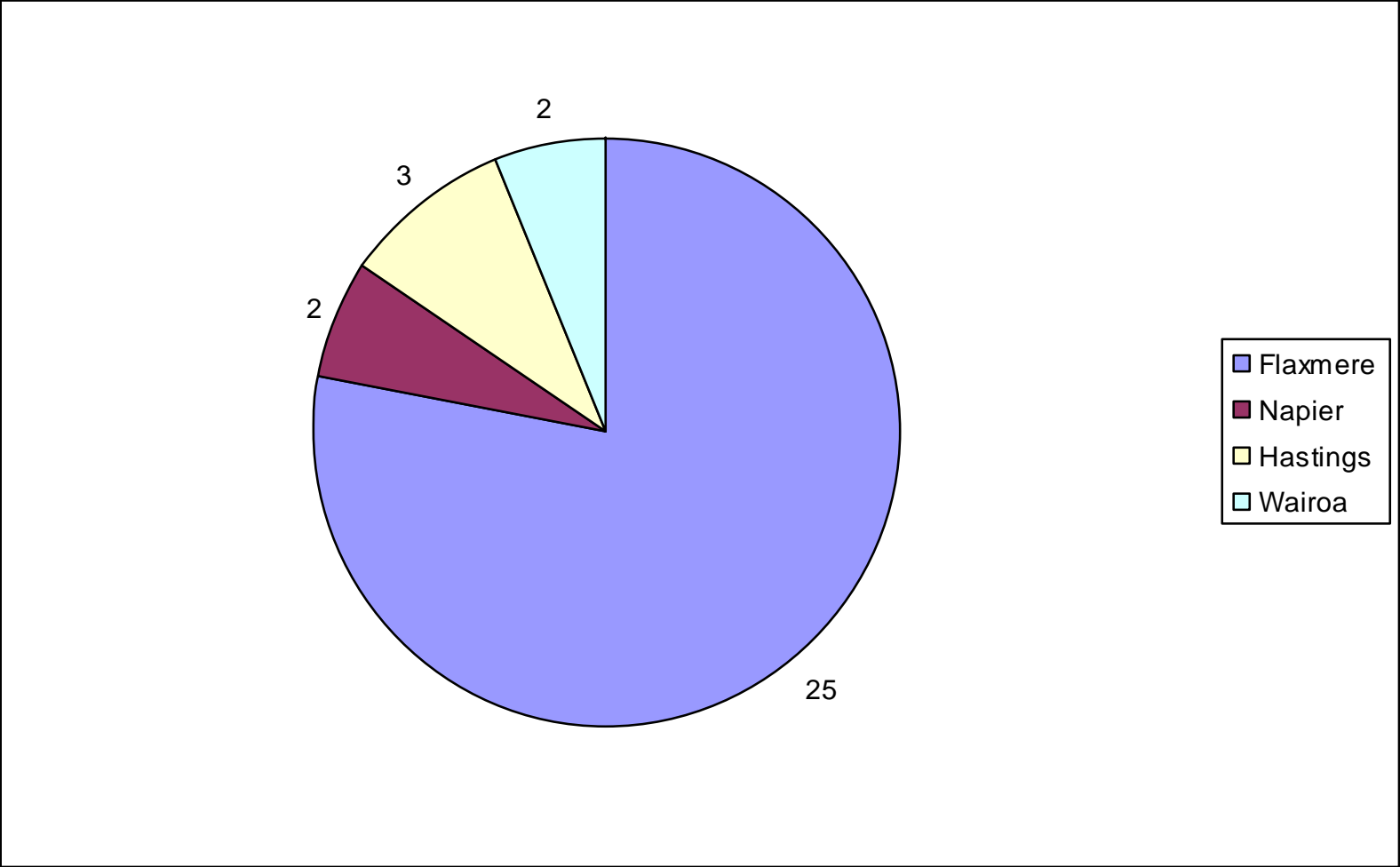
[www.kidshealth.org.nz](http://www.kidshealth.org.nz) or phone 878 1619 ext 4634



# Say Ahh - Background

- Established Oct 2010 in response to cluster of ARF in Flaxmere (incidence >300/100,000 2010)
- Joint venture between DHB Population Health and maori provider – delivered by Public Health and primary care based school nurses and Kaiawhina
- Covers 3 full primary, one secondary and one Kura Kaupapa – total 2200 students

# ARF notifications in past 5 years



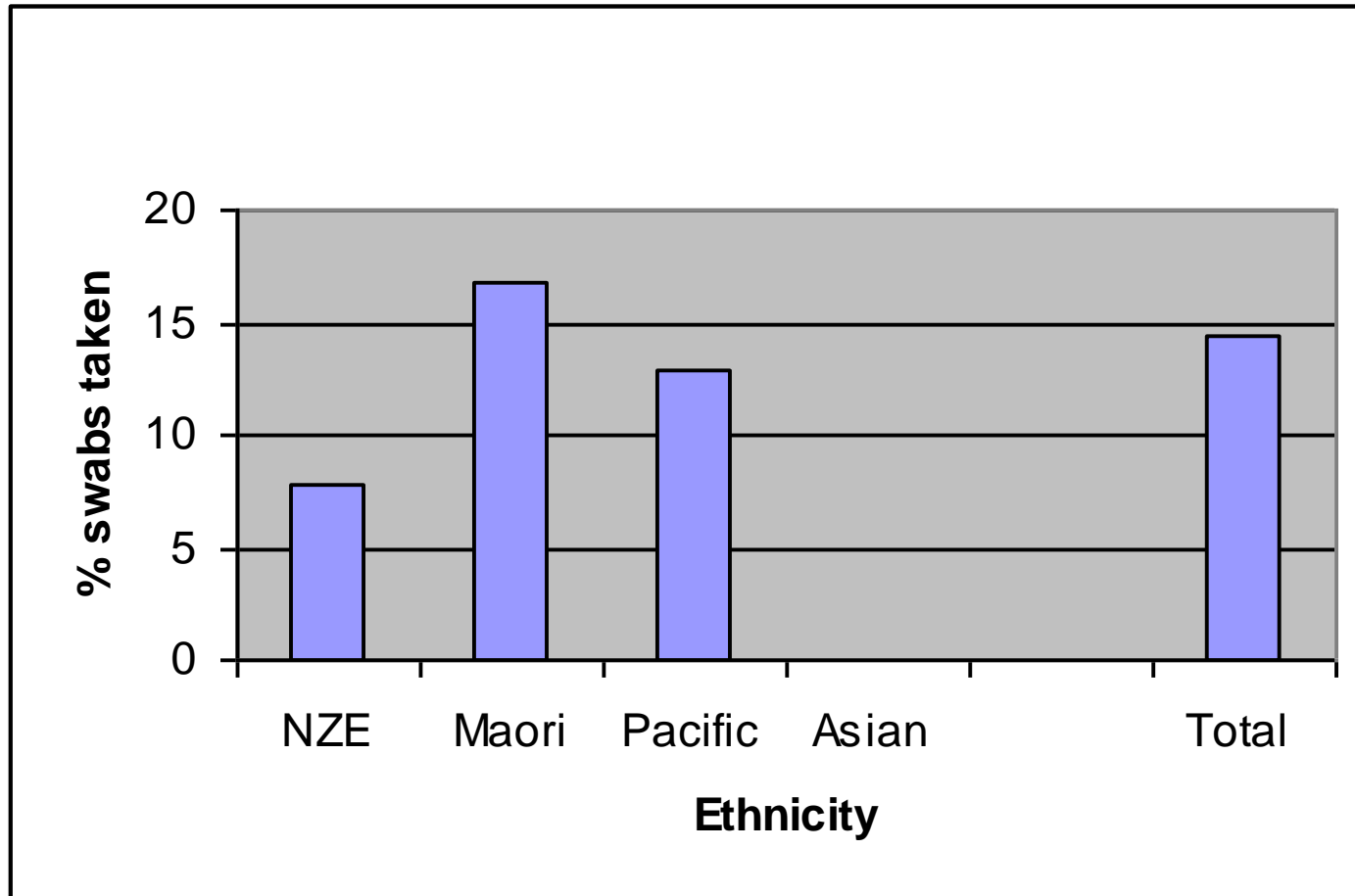
# Say Ahh - Background

- Positive swabs offered treatment by own GP or Say Ahh nurse under standing orders
- Treatment of choice – once daily Amoxycillin
- Household contacts swabbed under NHF criteria and if symptomatic
- Dedicated social worker – all positive families eligible for housing assessment including free insulation and clean heat

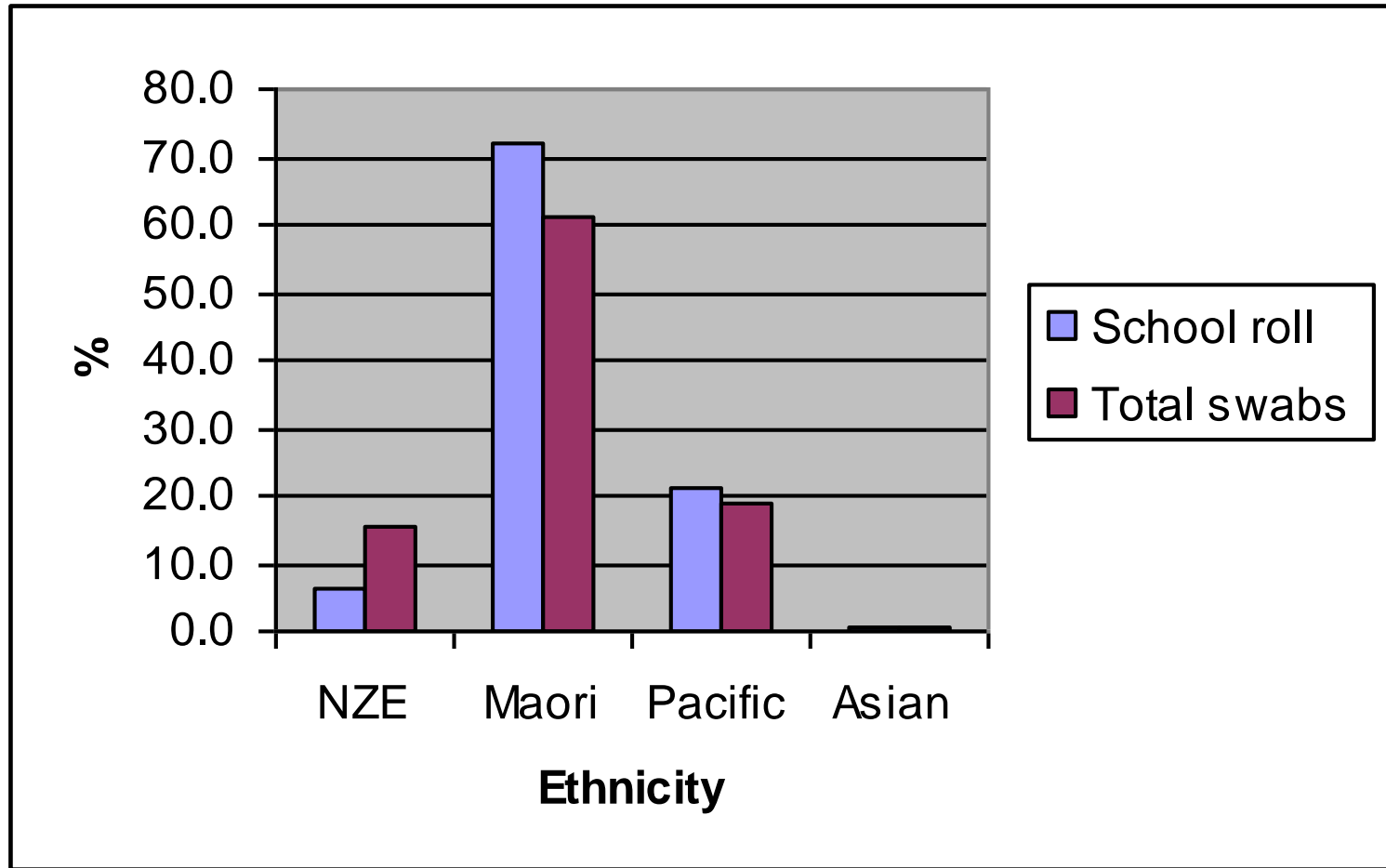
# One year on

- 1867 swabs taken
- 14.4% positive - varies by ethnicity
- Positivity rate has reduced over the year
- Referrals to Healthy Housing Programme
- ARF cases – none from Oct 10 – till June 11
  - 3 from Flaxmere since June
  - 1 attended non-participating school
  - 1 no history of sore throat but just returned from Samoa
  - 1 just notified

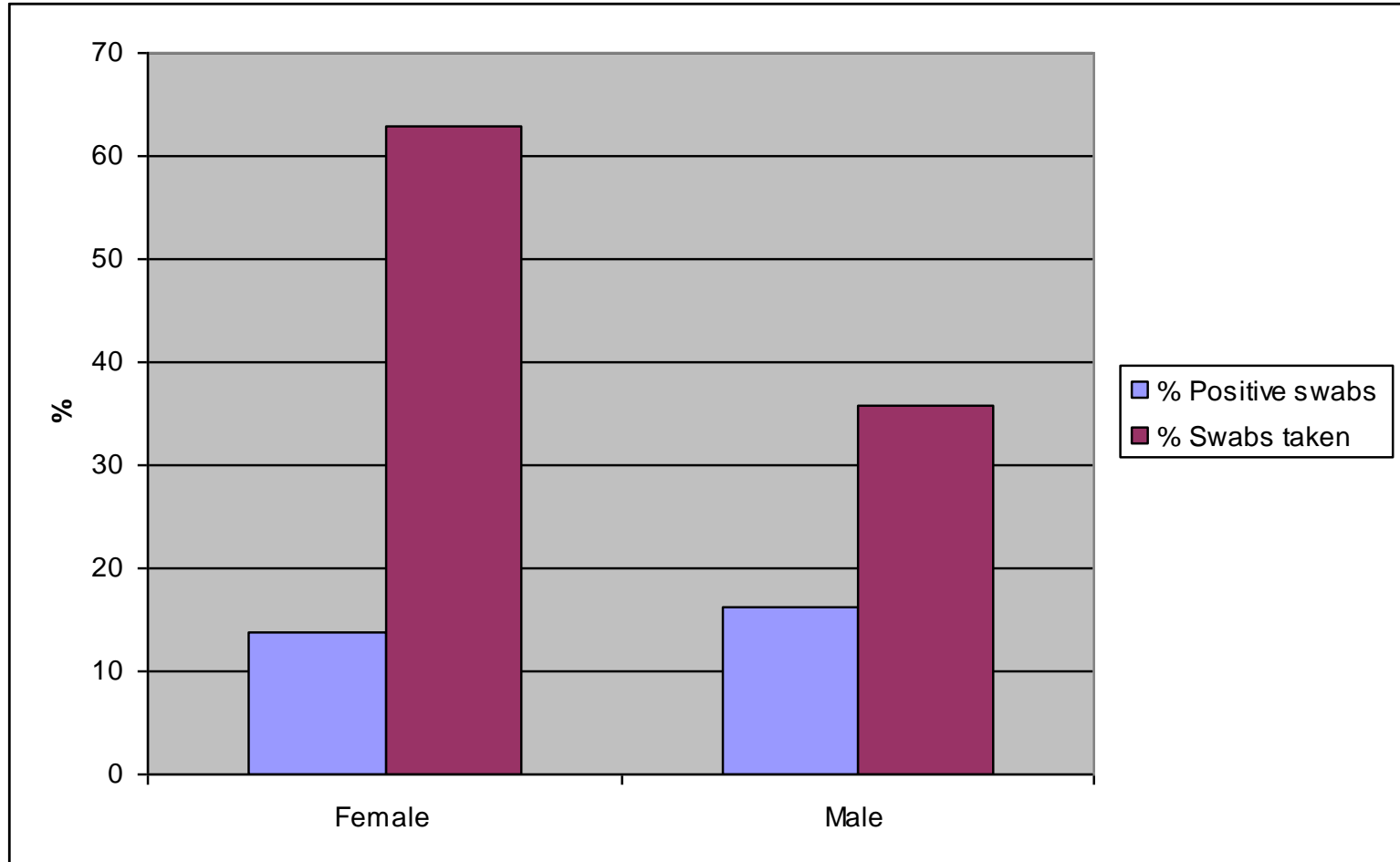
# % positive swabs by ethnicity



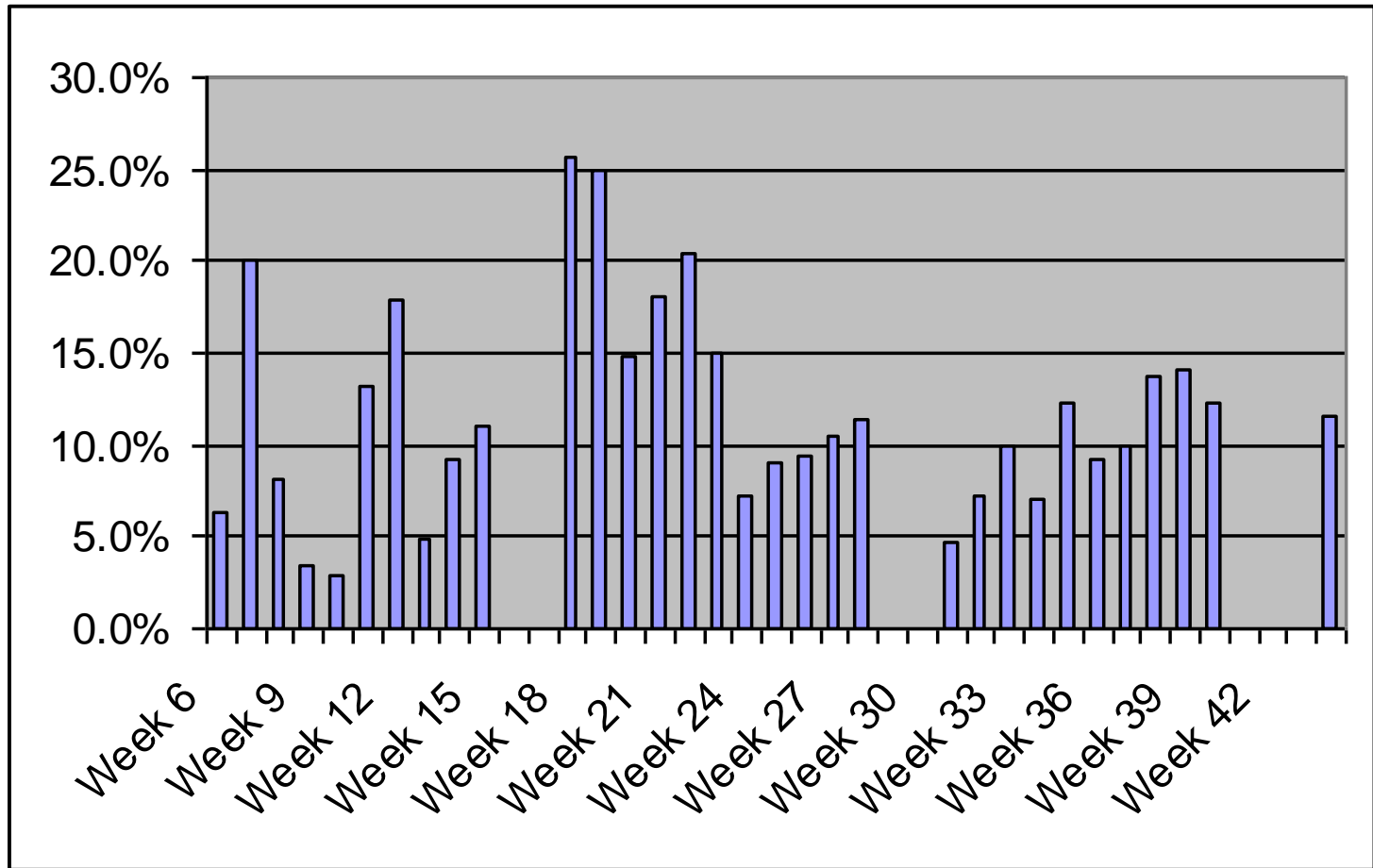
# Equity of swabbing?



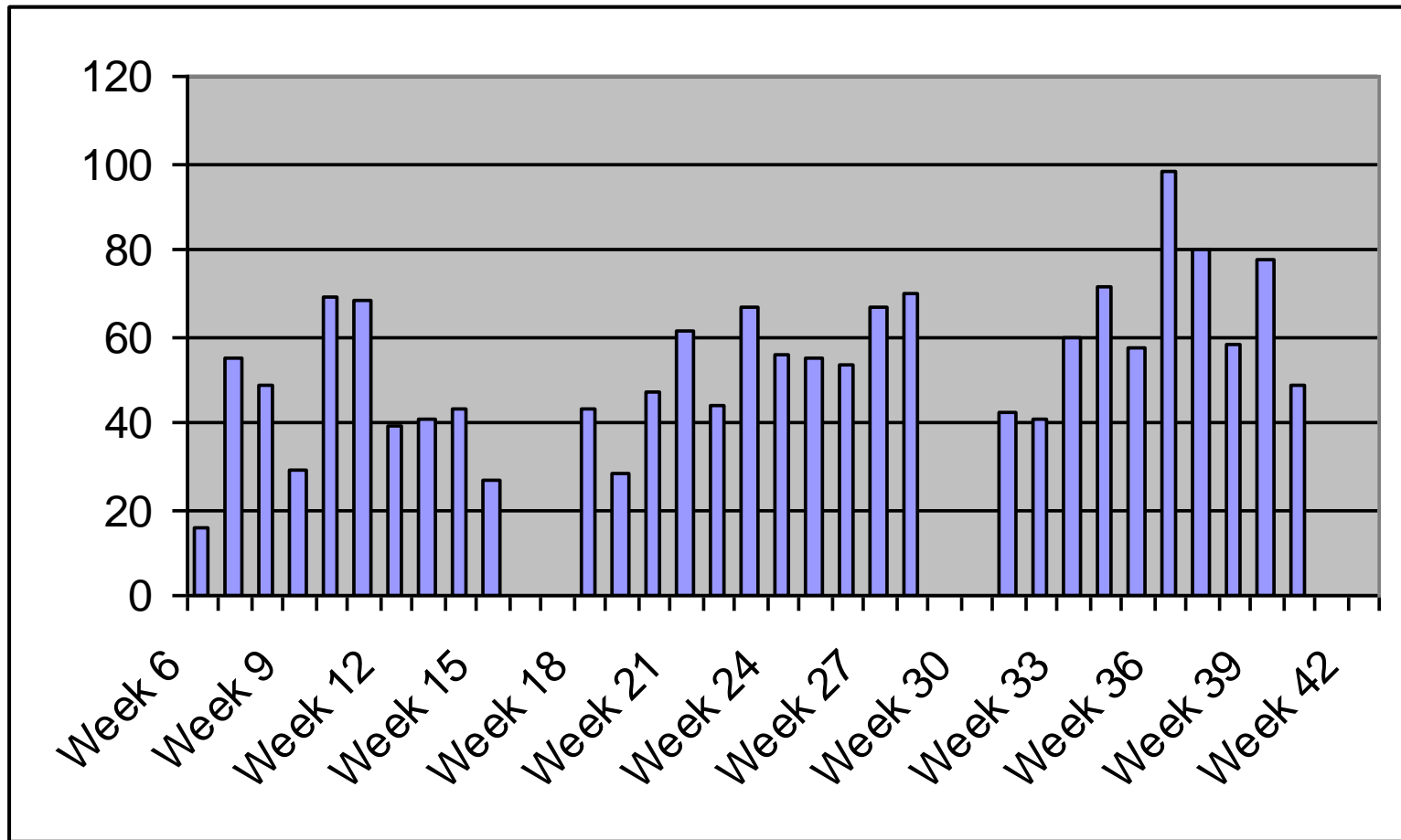
# Swabbing by gender



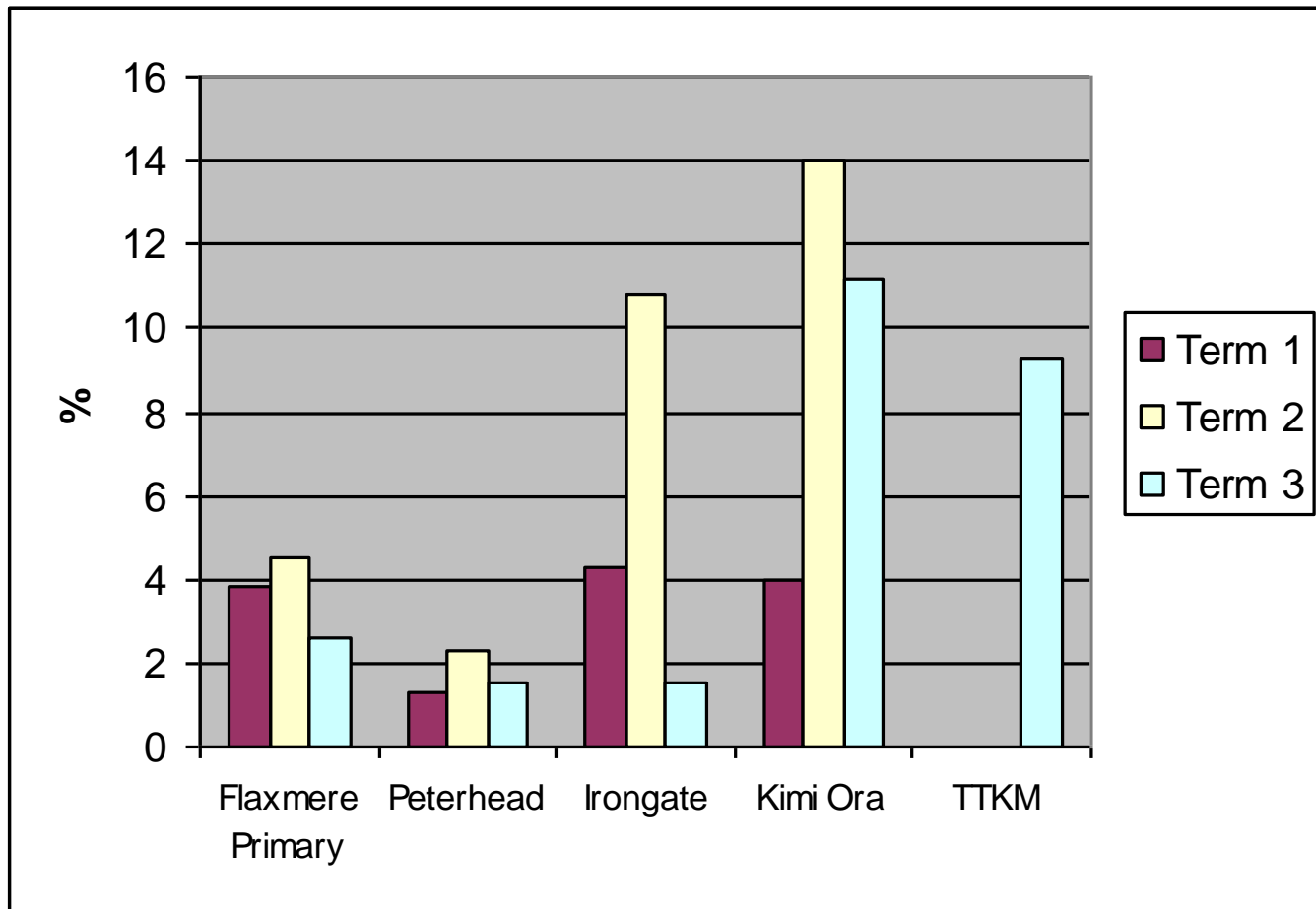
# % positive swabs over year



# Number of swabs taken over year



# % positive swabs by school over year



# ISSUES AND SOLUTIONS

Issue	Solution
Equity of swabbing – gender, ethnicity	Increase community awareness( health promotion esp. PI community)
Consent form return rate – complex form ( legal advice), barrier to participation and understanding	National solution required Working with schools to increase return rates
Data - capture and analysis, reporting template for MOH	Nationally agreed reporting framework (clinically relevant)
Cases occurring in schools outside Say Ahh programme	Criteria for extending to other areas? Primary care awareness raising
Social environment - how can we really modify? Esp overcrowding	Needs discussion
Sustainability – how long does programme continue for?	National guidance required



**SAY  
AHH**

**Sore throats can lead to  
rheumatic fever and heart disease.  
Get them checked early.**



[www.kidshealth.org.nz](http://www.kidshealth.org.nz) or phone 878 1619 ext 4634

